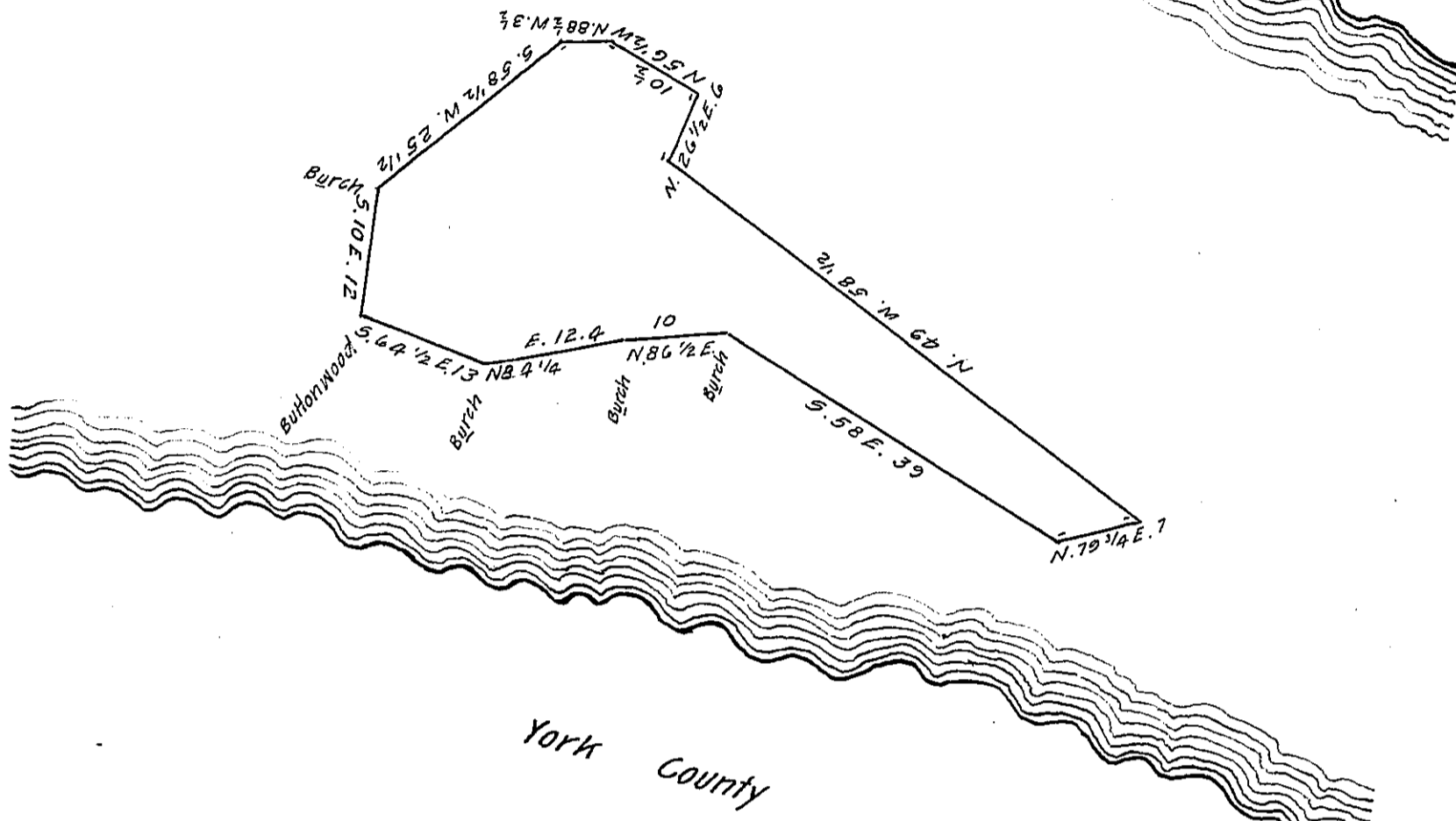


FORM No. 1.

Lancaster County



York County

The above is a Draught of Peter Mundorffs Island called Long Cripple, Containing seven acres, and sixty perches, Situate in Conostogo township, (in the Warrant called Manor township) Lancaster County, and in the River Susquehanna, opposite to and on the West side of Long Island. Surveyed for Peter Mundorff. In pursuance of his Warrant dated Octo^r 6th 1840.

Surveyed by

James Colwell D.S.

To Jacob Sallade S. G. Pa.

IN TESTIMONY that the above is a copy of the original remaining on file in the Department of Internal Affairs of Pennsylvania, made conformably to an Act of Assembly approved the 16th day of February, 1833, I have hereunto set my Hand and caused the Seal of said Department to be affixed at Harrisburg, this first day of May 1906

James D. Brown
Secretary of Internal Affairs.